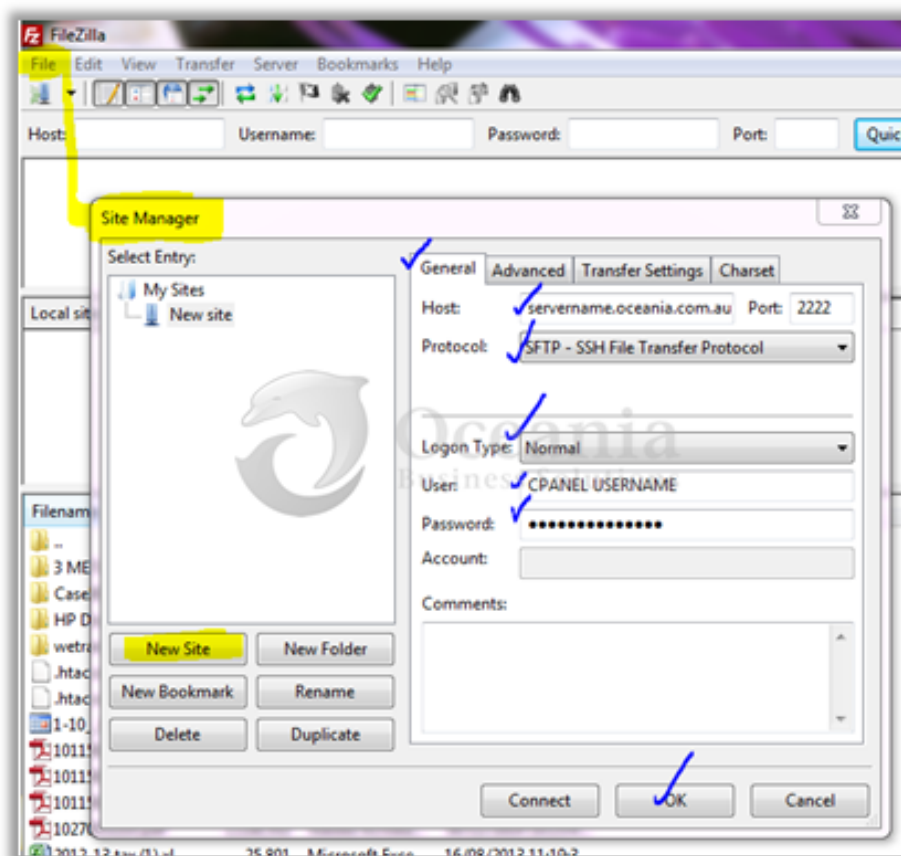


FileZilla Connection

Recommended FTP connection – Using SFTP

- ✓ Launch FileZilla
- ✓ Go to File >> Site Manager
- ✓ Press Button “New Site”
- ✓ Host: SERVERNAME.oceania.com.au (Use the “servername” as shown in cpanel) Port: 2222
- ✓ Encryption: SFTP – SSH File Transfer Protocol
- ✓ Logon Type: Normal
- ✓ User: Your cpanel username
- ✓ Password: Your cpanel password



Note: The above option will work for the main cPanel account only, not for additional FTP accounts created from cPanel.

Additional FTP accounts – Using Plain FTP

If you have any other FTP connections (eg addon domain or other FTP accounts) use the following method.

- ✓ Launch FileZilla
- ✓ Go to File >> Site Manager
- ✓ Press Button “New Site”
- ✓ Host: SERVERNAME.oceania.com.au (Use the “servername” as shown in cpanel) Port: blank
- ✓ FTP - File Transfer Protocol
- ✓ Encryption: Only use plain FTP (insecure)
- ✓ Logon Type: Normal
- ✓ User: Your cpanel username
- ✓ Password: Your cpanel password

